



HEXAGON23 DIRECT ECO-FLOW

Pure, hexagonal drinking water for your health with the innovative and perfectly coordinated perfectly coordinated **HEXAGON23** drinking water treatment.



Water is vital for humans, animals and plants. It plays a crucial role in our daily lives. But unfortunately, our tap water is not always as pure and healthy as we would like. It can contain various impurities that can affect the quality and taste of the water and potentially cause health problems.

Tap water can contain traces of heavy metals such as lead or copper that come from outdated plumbing. Chemical residues such as chlorine, pesticides and drug residues may also be present in the water. In addition, microbiological contaminants such as bacteria, viruses and parasites may be present. All these factors make it difficult to drink tap water without hesitation and to use it for everyday purposes.



OUR TAP WATER IS NOT SAFE

Before you drink tap water or use it for daily hygiene, you should filter and treat this water carefully.



LEAD (PB)

Lead can get into tap water through outdated plumbing and fixtures.



CHLORINE

Chlorine is often used as a disinfectant in the water treatment process.



PESTICIDES

Pesticides enter water bodies and tap water through agricultural activities.



DRUGS

Drugs often enter the wastewater system through urine and cannot be completely removed.



HEAVY METALS

Heavy metals can get into tap water from outdated water lines and pipes.

DRINKING WATER IS CONTAMINATED WITH A VARIETY OF MICROBIOLOGICAL & CHEMICAL POLLUTANTS

Unfortunately, drinking water is contaminated with a wide range of microbiological and chemical pollutants. It is estimated that there are between 2,500 and 4,000 contaminants in water, but only about 50 to 100 of these are regularly tested. These alarming figures illustrate that tap water is not a reliable source of drinking water worldwide.

Instead of facing these uncertainties, we offer you a solution: Hexagon23, a state-of-the-art osmosis plant. Our system allows you to purify the water in your home and remove the polluting substances. With **Hexagon23**, you will get healthy and reliable drinking water that meets the highest quality standards. It is an unfortunate fact that untreated tap water - no matter in which country of the world - as well as mineral water (whether in plastic bottles or glass bottles) are **not suitable as drinking water**. A simple reverse osmosis system or a conventional filter system is also not a suitable solution. These systems often do not have the desired effectiveness, are prone to germs, are prone to defects, and do not produce hexagonal, healthy water.

THE SOLUTION

HEXAGON23

Trust Hexagon23 to ensure the safety and health of your family. Ensure a sustainable future by eliminating plastic bottles and relying on our osmosis system instead. Together, let's start on the path to a better water supply.



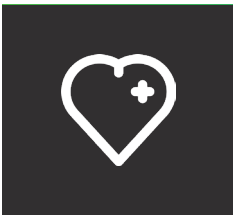
The solution to this problem is HEXAGON23, an innovative and perfectly tuned drinking water treatment system installed under the sink. With HEXAGON23, you can demonstrably produce your own spring water every day, with all its health benefits. As a visionary and a man at heart, I, Marco Fendt, owner company wecatec, who has studied and tested hundreds of different filter

systems and drinking water systems during his travels all over the world, thought about how to develop a perfectly tuned drinking water system. Together with my experienced team, consisting of scientists, doctors, engineers and experts, we have spent years of intensive research and development.



Our goal was to create not just an ordinary reverse osmosis plant or filtration system, but a fully tuned drinking water treatment system that could meet diverse needs and requirements and be used worldwide. A system that provides **pure, hexagonal, high-energy spring water**, is affordable, and offers low-cost replacement filters. In addition, it should be user-friendly and have a unique quality.

With HEXAGON23, we have successfully achieved this. We have created something unique and ingenious for people all over the world.



You can trust HEXAGON23 and experience the benefits of pure, healthy water tailored specifically to your needs. Invest in your health and enjoy the pure elixir of life with HEXAGON23.



CHANGING THE FILTER IS INCREDIBLY EASY AND CAN BE DONE BY ANYONE.

CHANGING THE FILTER UNIT

The single 4in1 safety combi filter and the two filters in the Hexagon23, the 3in1 combi filter (PPC) and the 2in1 (TC) should be replaced once a year. The 800 RO membrane should be replaced every 2 years. The Hexagon23 has 3 different automatic rinsing functions.



The HEXAGON23 flushes itself once a day when not in use to ensure that no stagnant water remains and to prevent possible germ formation. This keeps the water fresh and free of unpleasant odors at all times.

THE ONLY OF ITS KIND

**PRODUCES
HEXAGONAL
DRINKING WATER**


At the touch of a button, you can produce healthy, hexagonal water.

**DETOX
AND
PURIFICATION**

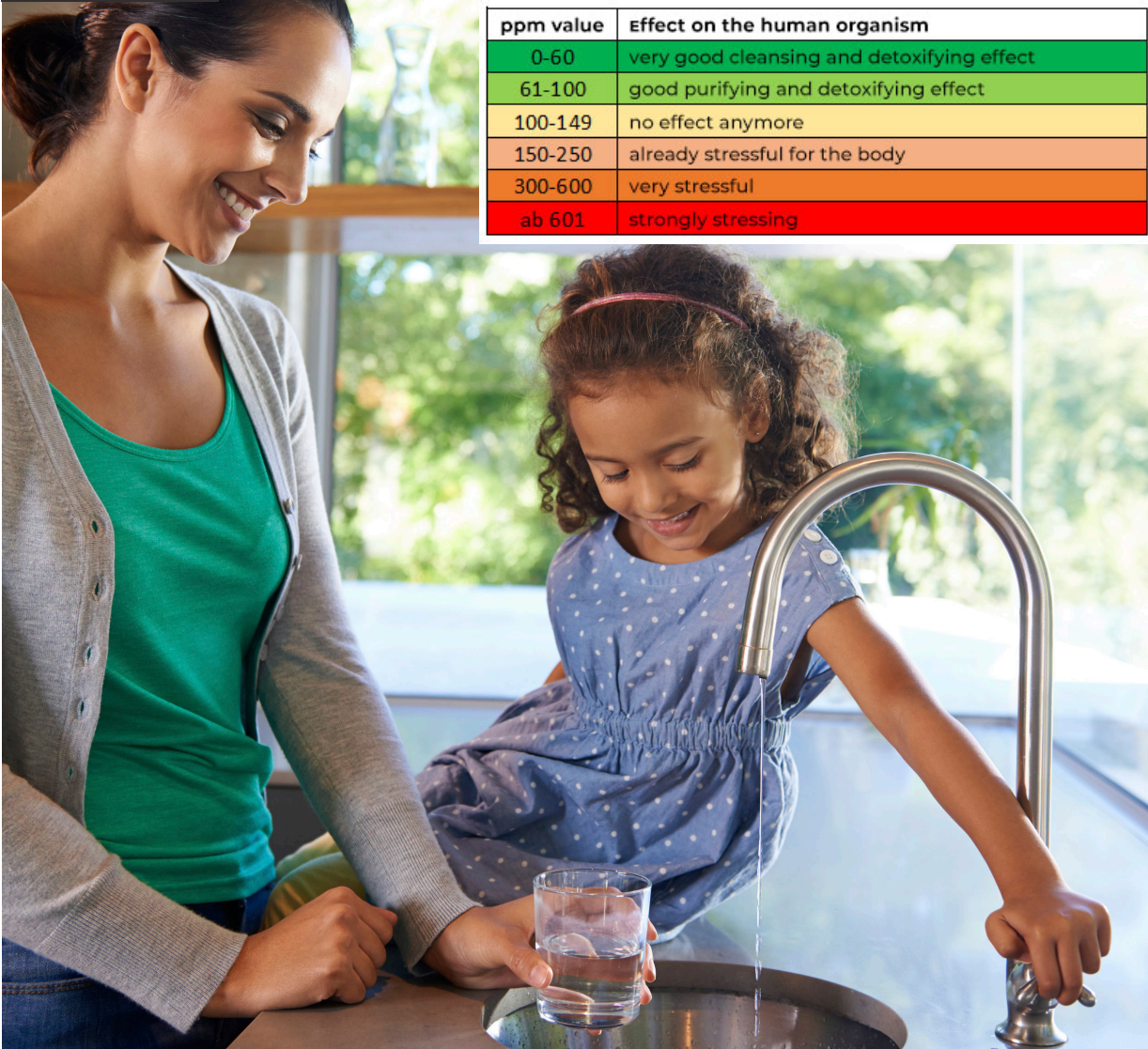
Pure water detoxifies the body very well.

**IMPROVES
THE TASTE OF
WATER**

The taste of the filtered water is significantly improved.



The Hexagon23 Direct Eco-Flow is the only compact osmosis system that simultaneously water from all pollutants at the same time, makes the water pure (value (value below 40 ppm) and thus ensures that the body can detoxify and remove slag. detoxify and remove toxins and produce cell-available, hexagonal water. produced.



ppm value	Effect on the human organism
0-60	very good cleansing and detoxifying effect
61-100	good purifying and detoxifying effect
100-149	no effect anymore
150-250	already stressful for the body
300-600	very stressful
ab 601	strongly stressing

FILTER PROCESS

HEXAGON23

HOW THE DIRECT ECO-FLOW OSMOSIS SYSTEM HEXAGON23 WORKS

We would now like to give you a brief overview of how the HEXAGON23 is constructed and the path through which the water passes step by step. Please note that the system may change slightly depending on the specific requirements on site.



STEP 1

The water first passes through a manual **leakage stop (water stop)**, which performs an important protective function for your home, apartment or business. This stop automatically shuts off the water supply as soon as a potential leak is detected, preventing unwanted water damage.



STEP 2

The water then passes through a technologically advanced **4-in-1 safety combination filter**.



Filter unit (felt): Sediment filter to reduce particles such as impurities, debris, sand and rust.

Filter unit (CB): Carbon block filter to reduce chlorine, chemicals, odors and other particles.

AntiScale filter unit: Changes the structure of the lime crystals and thus prevents lime deposits inside the HEXAGON23.

Filter unit UF Log7/6/germ barrier: Removes %99.99999 of microbiological pollutants such as bacteria and filters out harmful substances larger than 0.01 micron.

STEP 3

In the next step, the water passes through a **special 3-in-1 combination filter** (PP+CB-chloramine), which ensures effective cleaning. The PP sediment filter reduces particles of impurities such as dirt, suspended solids, rust and sediment. The **carbon activated carbon block filter** reduces chlorine, chemicals, heavy metals, pesticides and odors. The **chloramine filter** specifically removes chloramines to ensure the highest water quality.

STEP 4

The water then reaches the heart of the HEXAGON23: the **powerful 800 GPD high-performance RO membrane**. This high-quality membrane ensures an optimum flow rate of up to 2.2 liters per minute, 3,028 liters per day and has an excellent ratio of 1 liter of pure water to just 0.5 liters of waste water.

The water is forced through the fine pores of the membrane under high pressure. This technology, which originated in space travel, ensures reliable fine filtration and removes impurities as small as 0.0001 micrometers. Heavy metals, uranium, hormones, antibiotics, lime, aluminum, glyphosate, microplastics, viruses, germs, bacteria, legionella and other pollutants are thus effectively filtered out. The result is pure and clean water of the highest quality.





STEP 5

The water then passes through a **post-filter (TC) 2in1 (CB activated carbon block + germ protection)**. The CB activated carbon block post-filter optimizes the smell and taste of the water thanks to high-quality activated carbon. Activated carbon is proven to be the most efficient method of eliminating unwanted gases and odors. The CB filter absorbs low-molecular organic substances as well as residual by-products from chlorination, such as chloroform and other trihalomethanes (THMs).

After this filtration stage, you therefore receive the purest and cleanest drinking water, just the way you like it.



STEP 6

In the next step, the water passes through the exclusive waterart, a special and unique development in **water swirling and energizing technology**. This demonstrably and noticeably transforms the water into revitalized, hexagonal and energetic spring water/drinking water. The innovative swirling technology creates a structured water form that imitates the natural state of the water and can therefore enhance its positive properties.

This unique process not only purifies the water, but also vitalizes it and gives it life-energizing properties. The result is refreshing and health-promoting drinking water that supports your vitality and well-being.



And NOW you can enjoy pure, fresh and energy-rich drinking water/spring water in hexagonal form at any time. This vitalizing spring water/drinking water plays a crucial role for your health and well-being, as it is cell-available and detoxifies your body as well as frees it from waste products.

HEALTHY DRINKING WATER

By regularly consuming 2 to 3 liters of Hexagon23 water per day, your immune system will be strengthened and you will gain vitality and activity. Many physical complaints can improve significantly and you will feel better and more alive overall.

THE PURE, HEXAGONAL DRINKING WATER OF THE HEXAGON23 CAN BE USED IN A VARIETY OF WAYS:



**AS DRINKING WATER
FOR PEOPLE AND**



**FOR THE PREPARATION
OF BABY FOOD**



**FOR THE PREPARATION
OF TEA AND COFFEE**



**AS AN INGREDIENT
IN SAUCES AND FOR
COOKING**



**AS A BASE FOR
COCKTAILS AND
SPIRITS**



**FOR WATERING
PLANTS AN
FLOWERS**

HEXAGON23 WATER HAS:

12

Years experience

wecatec has been working and researching in the field of drinking water treatment for more than 12 years.

Pure water

excellent detoxification and removal of waste products.

∞

Hexagonal structure

The filtered water is healthier and comparable to spring water.

100 %

Pollutant-free

All pollutants and impurities are reliably filtered out.

Discover the benefits of this unique hexagonal drinking water and integrate it into your everyday life for a healthy and vital lifestyle for you and your family.

YOUR BENEFITS

HEXAGON23

Our HEXAGON23 is a revolutionary osmosis system specifically designed to provide the highest performance and quality. With its direct flow system that does not require a tank, it sets new standards in the industry. Comparable to a Bentley among reverse osmosis and filtration systems, the HEXAGON23 impresses with an exceptional price/performance ratio.



EXCELLENT DRINKING WATER QUALITY

HEXAGON23 provides pure, healthy and hexagonal spring water for your health and well-being. Our system has been extensively tested and confirmed by expert opinions.



PURE AND HEXAGONAL DRINKING WATER

Proven pure hexagonal drinking and spring water, supported by multiple expert opinions and studies. Enables optimal cellular availability and improved hydration.



PERFECTLY COORDINATED SYSTEM

Thanks to the latest technology and careful planning, the HEXAGON23 offers optimal performance. Every single element of the system is designed to give you the best possible result.



MAXIMUM HYGIENE AT ALL TIMES

The double germ protection and automatic rinsing functions effectively prevent the water from becoming contaminated. The manual water stop also provides additional safety.



YEARS OF RESEARCH AND DEVELOPMENT

The Hexagon23 has undergone years of intensive research and development to create a perfect drinking water treatment system for every location in the world.



24 HOURS CUSTOMER SERVICE

Our support team is here for you around the clock and can be reached by phone or email at any time. We answer all your questions about and are always at your side.



100% CUSTOMER SATISFACTION

You can rely on our experience and knowledge. Our customers are therefore very happy to recommend us to others.

SPARE PARTS AND FILTERS

You get reliable availability for all spare parts and replacement filters in case something goes wrong or needs to be changed.

LONG LIFE & QUALITY

The Hexagon23 impresses with its durability and high quality.

PERSONAL ADVICE

You will receive serious and honest advice and support at all times. We will help you decide on and install your new Hexagon23.

CONTACT US

You want a perfectly coordinated drinking water treatment system (under the sink) and finally pure, hexagonal and energy-rich spring water/drinking water for your family and your health? Then contact us.

You can find more on

www.wecattec.com



Complete set HEXAGON23

Everything is really included here! You get the HEXAGON23 from us as a ready complete set with all components:

- ➔ manual leakage stopper (water stop)
- ➔ special, external safety pre-filter 4in1 incl. accessories
- ➔ System (color white) incl. combi filter 3in1, membrane 800 GPD, afterfilter 2in1
- ➔ waterart (water swirling and energization)
- ➔ 3 way faucet (stainless steel)
- ➔ incl. necessary accessories

.01

MANUAL LEAKAGE STOPPER
(WATER STOP)



.02

SPECIAL, EXTERNAL SAFETY PRE-FILTER
4IN1 INCL. ACCESSORIES



.03

SYSTEM WITHOUT SINGLE TAP



.04

WATERART (WATER SWIRLING AND
ENERGIZING)



.05

3 WAY FAUCET (STAINLESS STEEL)



.06

INCL. NECESSARY ACCESSORIES



BUT DONT WE NEED THE MINERALS FROM THE WATER?

Anyone who believes that we can cover our mineral requirements from water and therefore need the minerals dissolved in water will be disappointed. This is what mineral water companies and/or waterworks like to tell people time and again.

Firstly, the quantity is far too low, even with mineral-rich so-called mineral water, and secondly, the minerals are usually not present in a bioavailable form. Our body needs organically bound minerals in colloidal form in order to be able to process them optimally. Only when these minerals have been «processed» by plants are they optimally bioavailable for us. We need minerals from a plant or another living organism that has previously metabolized the plant.

Minerals are usually contained in water in the form of mineral salts (also known as inorganic minerals). However, the human body only absorbs minerals in this form if it cannot meet its needs in organic form from food.

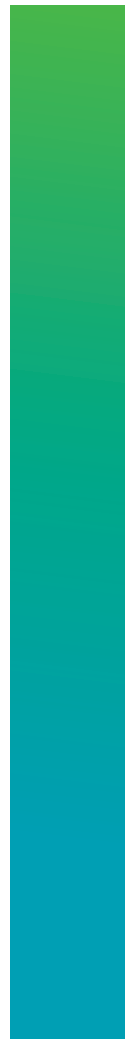
In contrast, minerals in food do not occur as mineral salts, but in combination with proteins and natural sugar.

The removal of these inorganic minerals by reverse osmosis is therefore even useful.

Conclusion:

People should and must absorb their organic minerals through food, including fruit and vegetables. NOT by drinking water!!!

With **HEXAGON23** you consume pure, soft, hexagonal drinking water similar to fresh, healthy spring water.





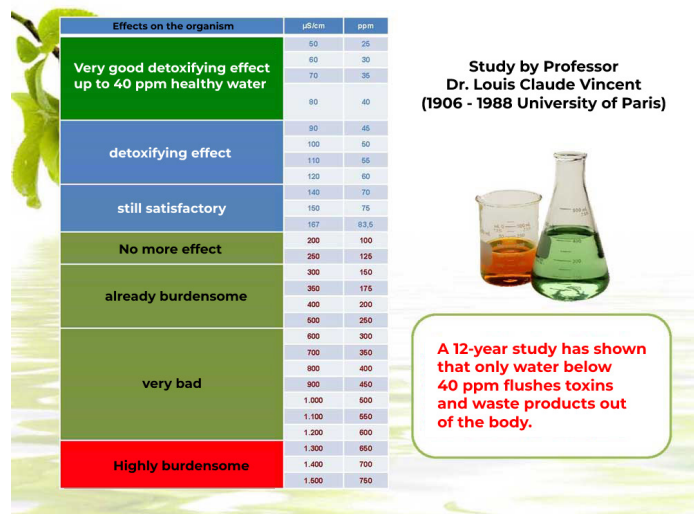
DRINKING WATER QUALITY ASSESSMENT

Professor Louis-Claude Vincent (University of Paris), on behalf of the French government, conducted 12 years of studies (water quality and mortality rate) on the characteristics of French drinking water in relation to the most common diseases of people in the different regions of the country. He discovered that the propensity for cancer and cardiovascular diseases was significantly higher in regions with hard water rich in lime and salt (high ppm values) than in regions with soft drinking water (low ppm value).

According to Prof. Vincent, the optimum electrical conductance (ppm value) of the water is below 50 ppm and the optimum pH value (acid/base value of a liquid) is 6.9 - 6.4 (slightly acidic).

He drew up the following table on the effect of water on the organism.

ppm value	Effect on the human organism
0-60	very good cleansing and detoxifying effect
61-100	good purifying and detoxifying effect
100-149	no effect anymore
150-250	already stressful for the body
300-600	very stressful
ab 601	strongly stressing

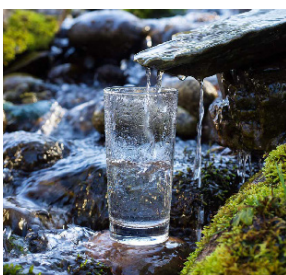


THE FUNCTION OF PURE WATER

The conductance (ppm value) of the water is therefore a good indicator of the purity of the water. All impurities such as minerals, salts or pollutants increase the conductance. Tap water has a ppm value of around 200 ppm to 650 ppm. Mineral water has a ppm value of around 200 ppm to 700 ppm Rainwater has a ppm value of around 20 to 40 ppm. Spring water, the epitome of pure and healthy water, has a ppm value of around 40 to 60 ppm. The pure, hexagonal water from the HEXAGON23 has a ppm value of around 25 to 40 ppm.

- the values naturally vary depending on the type of water/water quality -

The conductance of drinking water provides information on whether the water can absorb and transport substances in the body. The lower the ppm value, the cleaner and healthier the water. According to scientific studies by Professor Louis-Claude Vincent, healthy drinking water should have a conductance value of less than 50 ppm. If the conductivity exceeds 80 ppm, the rate of illness in the population increases significantly. The absorption capacity of the body's cells depends on the saturation of the water with foreign substances. Above a certain degree of saturation, expressed by the conductance, the water can no longer penetrate the cells by osmosis and develop its detoxifying effect.



The lower the conductivity (ppm value) of the water, the better it can fulfill its function and dissolve and remove toxins, waste products and acids from the cell.

BE IN TOUCH



CONTACT

wecatec Ltd.

Director: Marco Fendt

Email: info@wecatec.com

Website: www.wecatec.com

